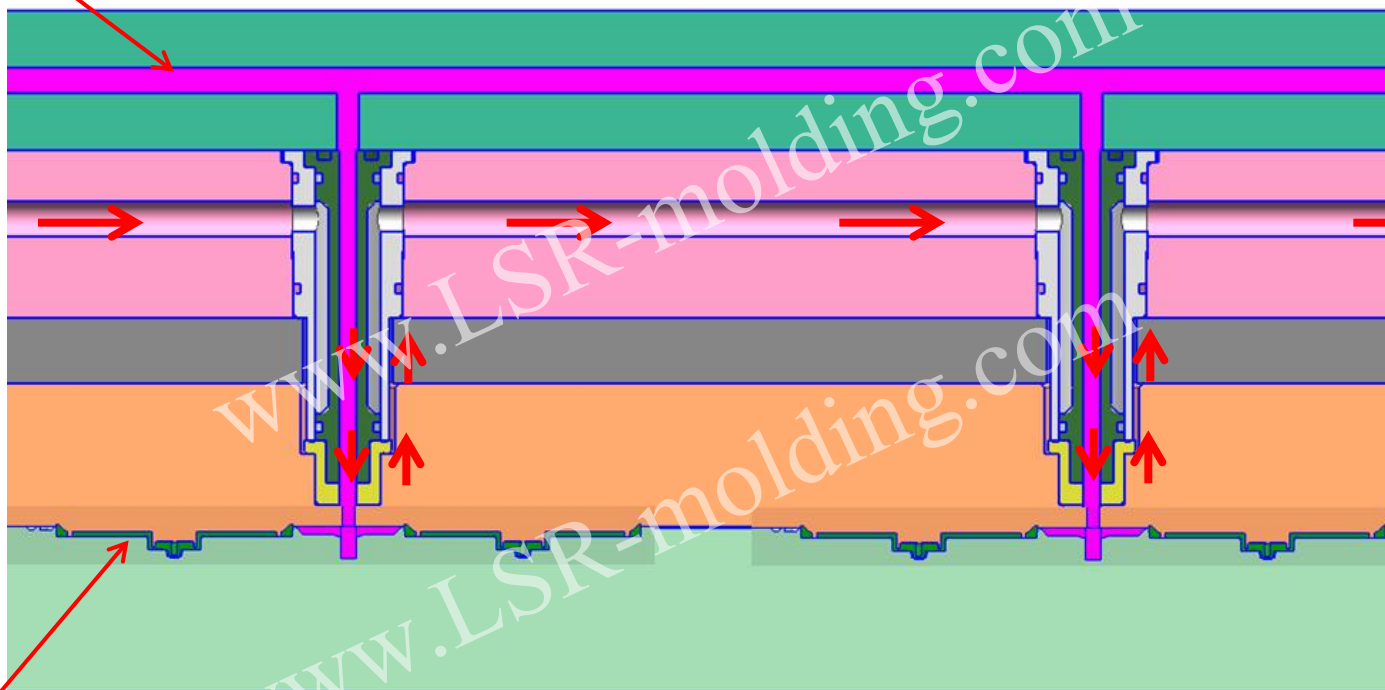


runner

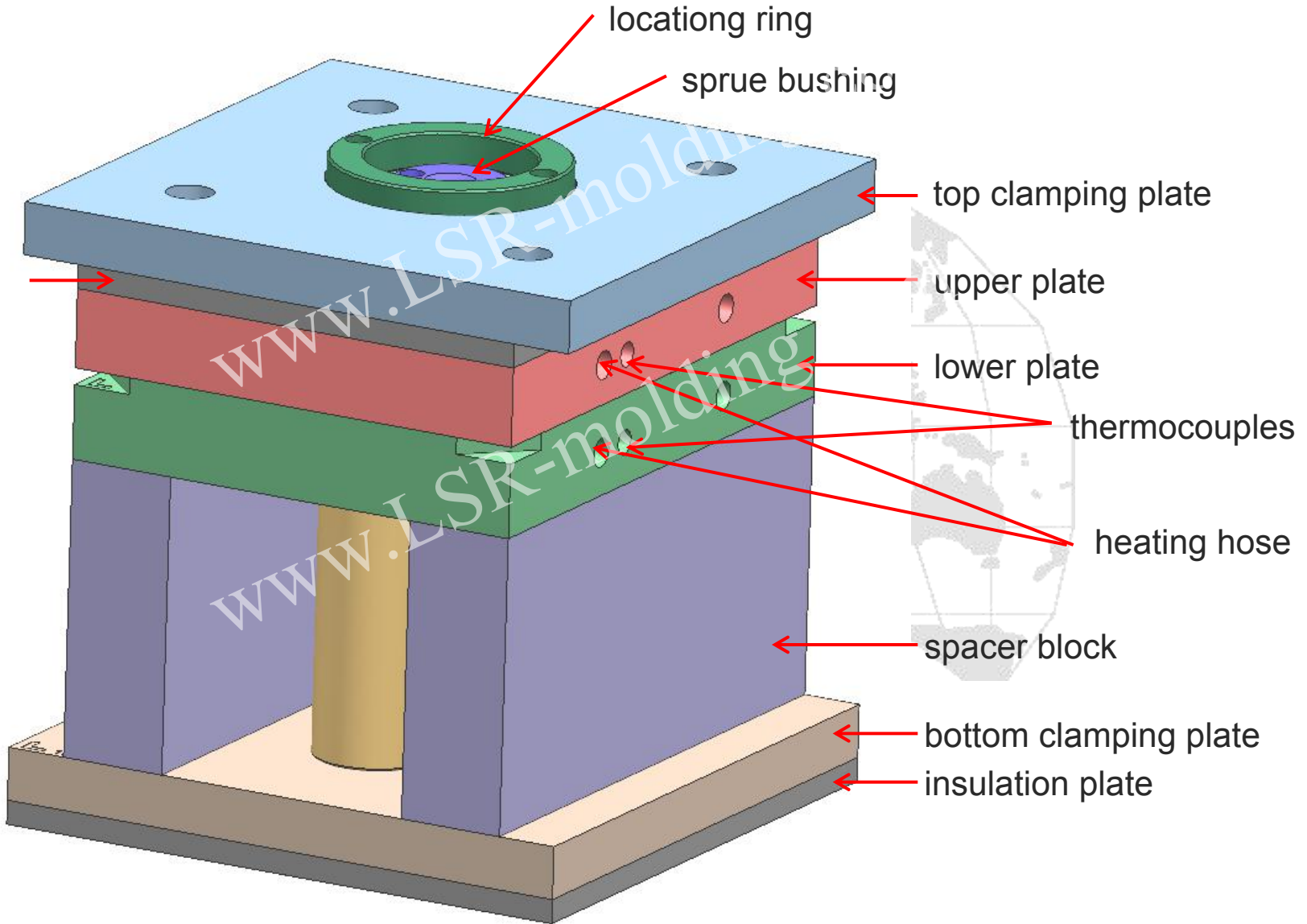


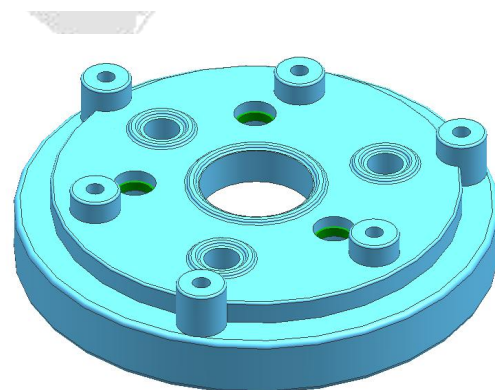
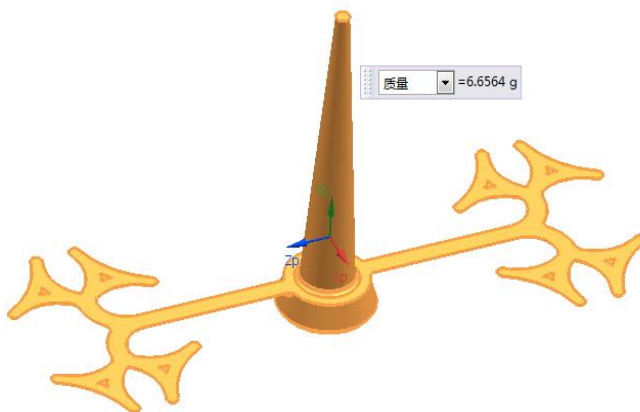
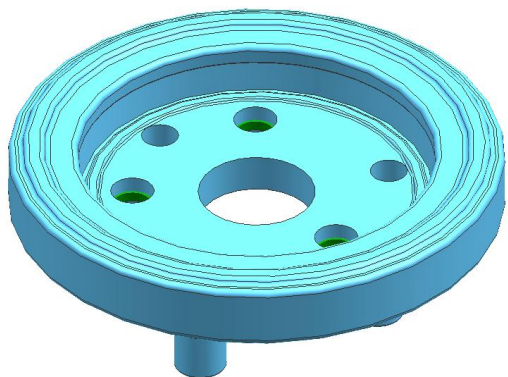
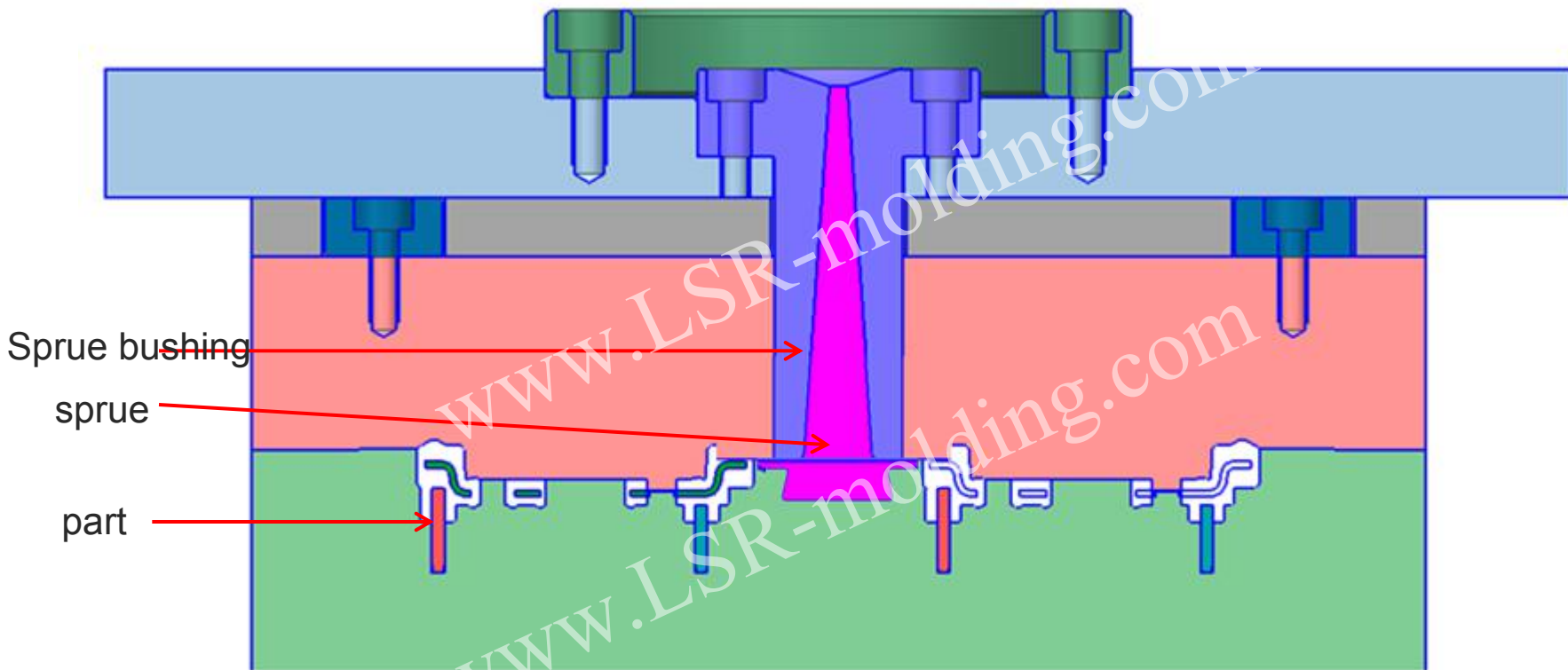
cooling water (inlet)

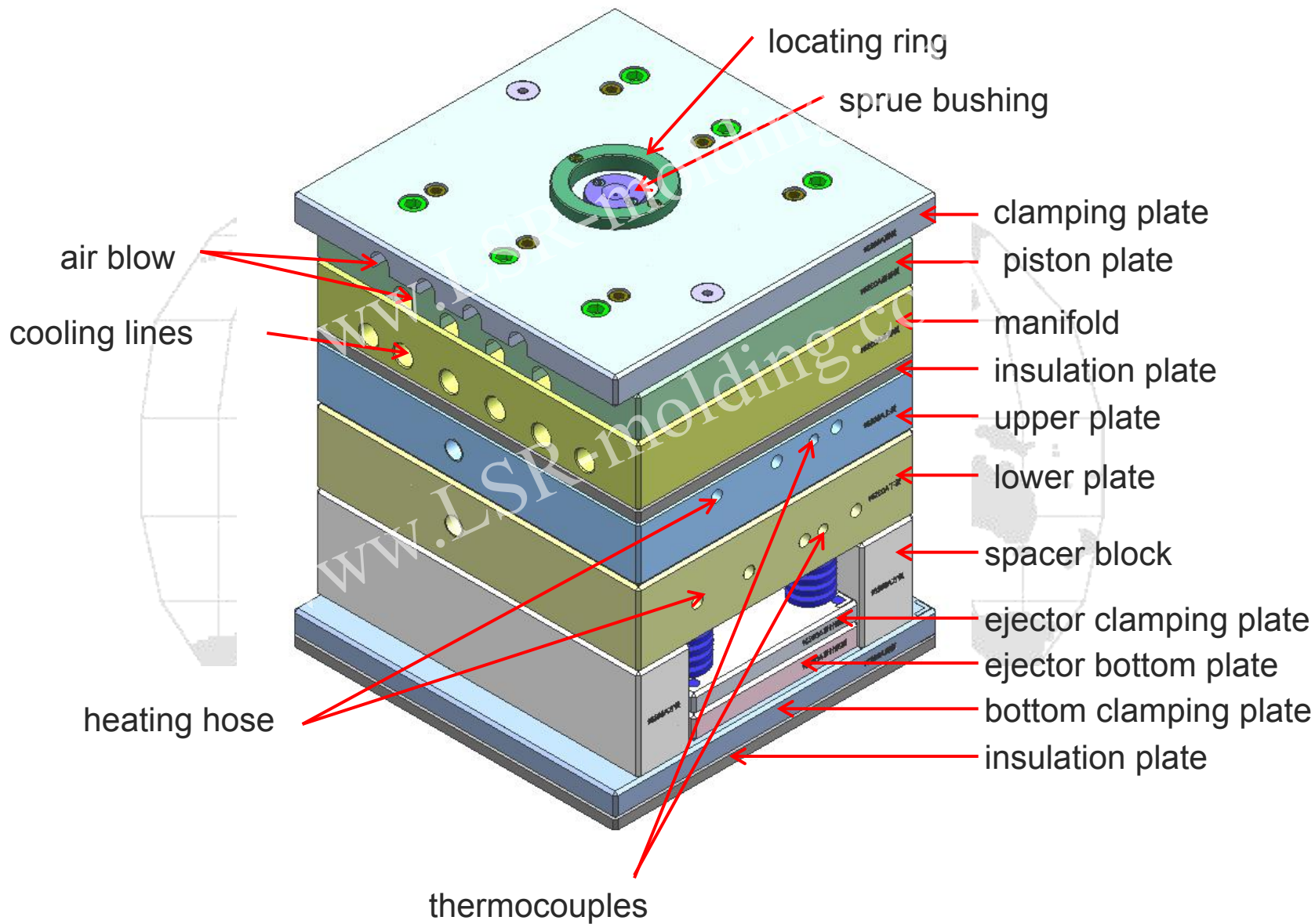
outlet

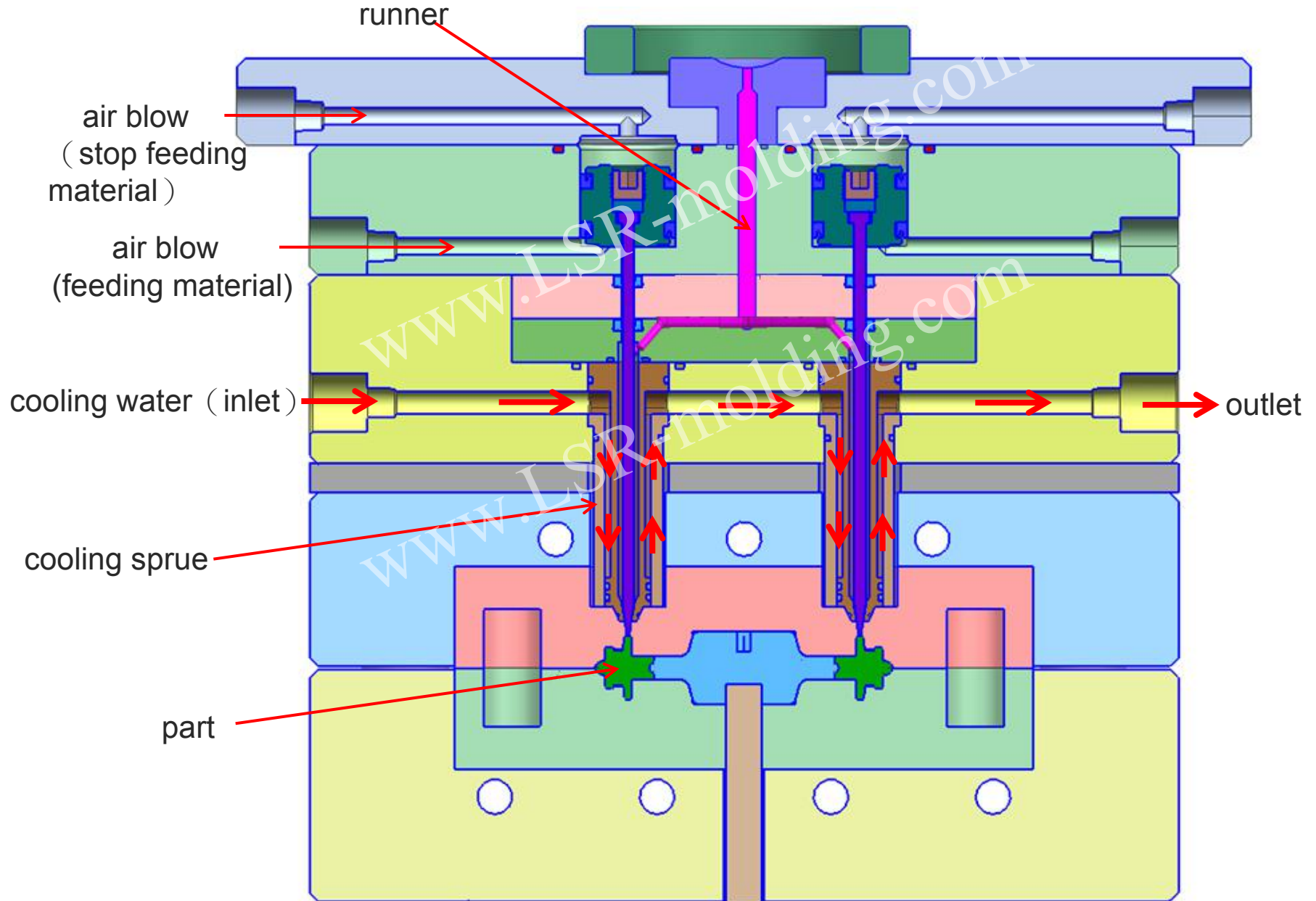
Part

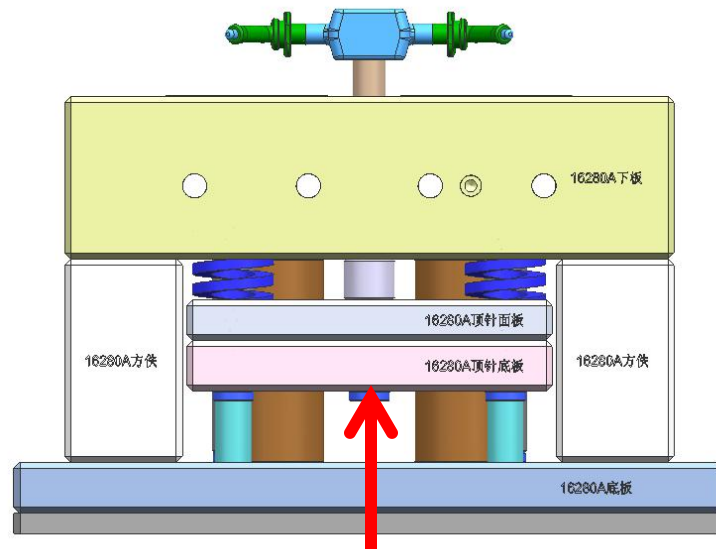
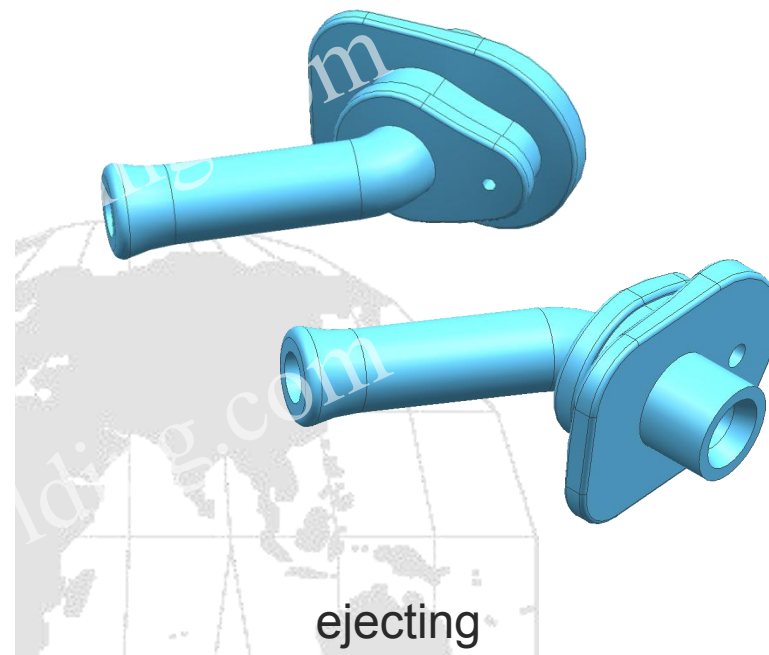
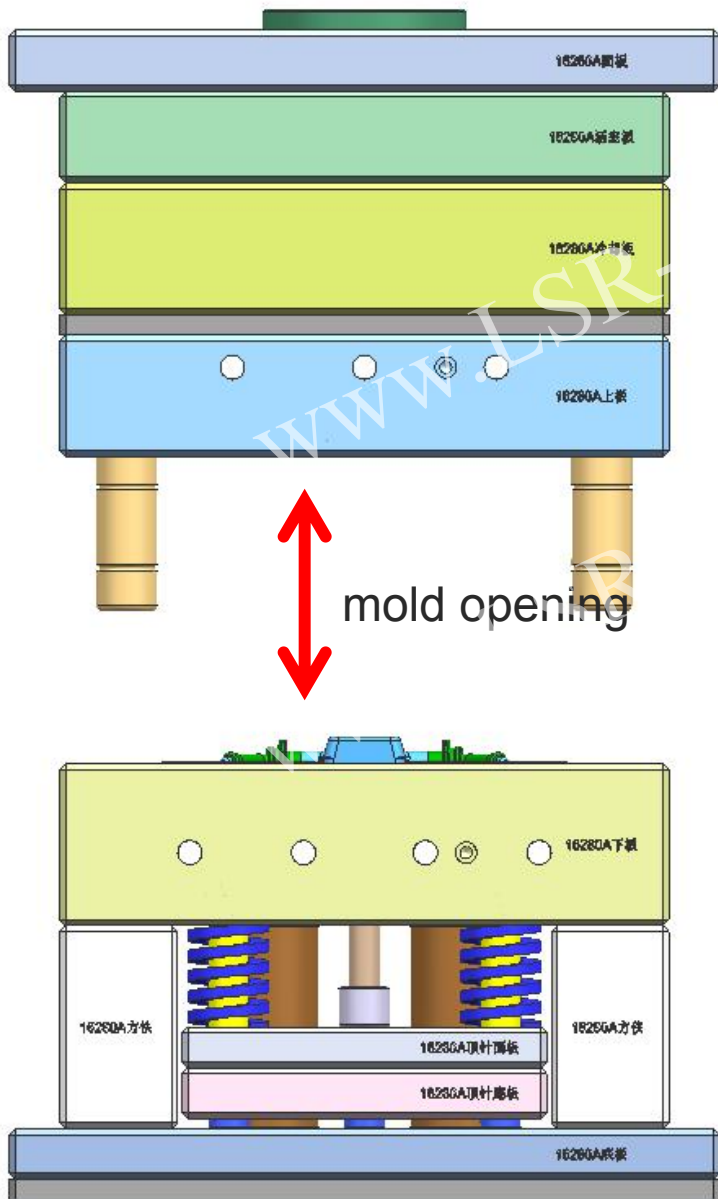


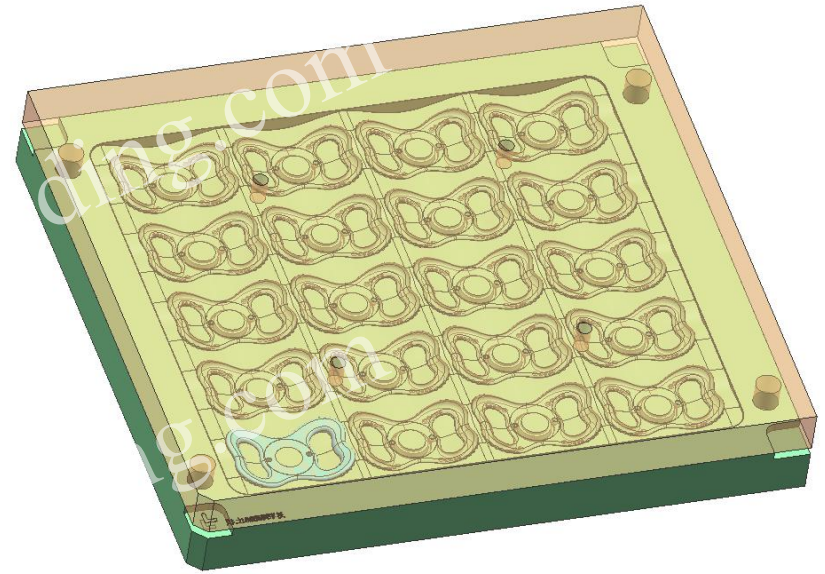






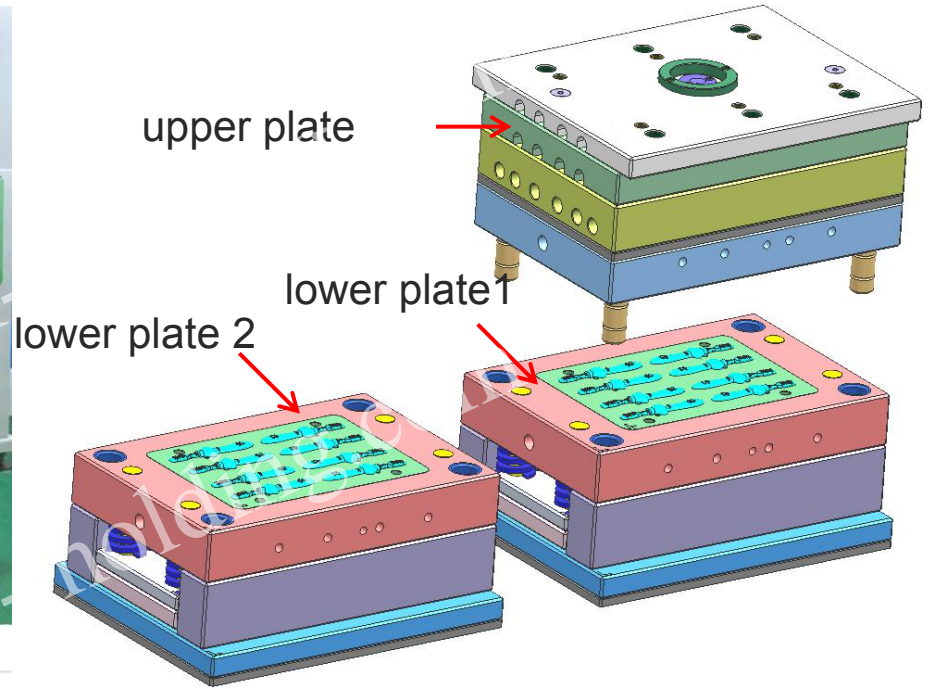






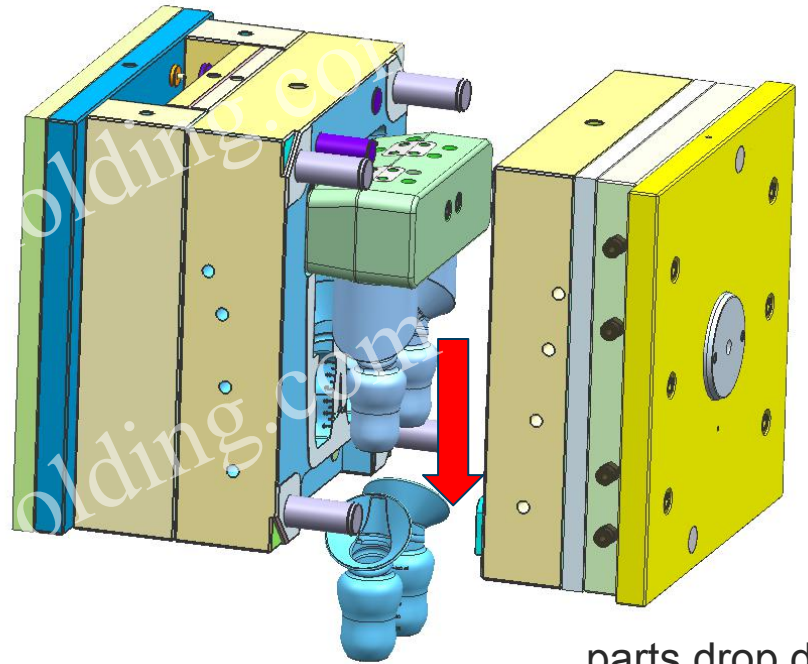
- 1.usually used for simple-structure mold tool (2 plates or 3 plates).
2. Runner is not required





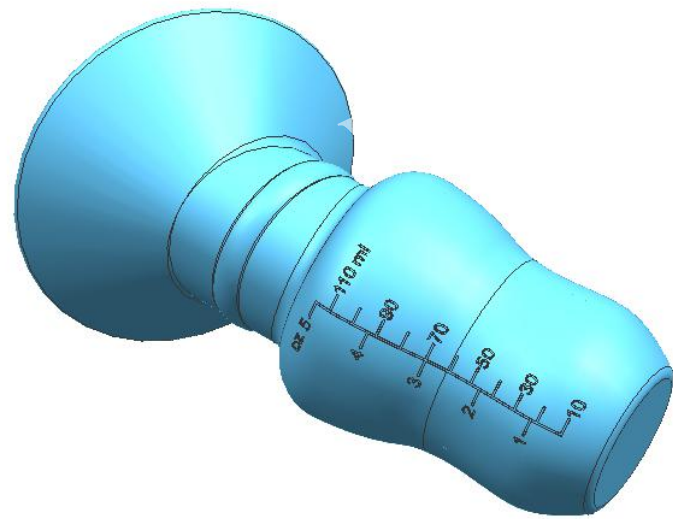
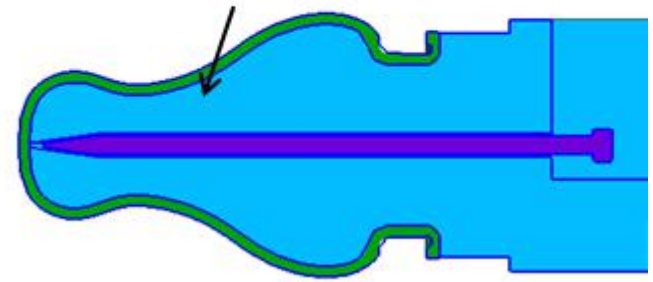
1. Usually used for two-shot molding, such as for molding for combining metal & plastic parts and over-molding.

2. Generally, 2 lower plates are required for improving production efficiency



parts drop down with air blow

吹气产品脱落



1. The parts drop down automatically. Automatic production can be achieved.